

Perfect supervision on site  
or from anywhere around the world!

## ■ HAASE Control System for Online Plant Control

Cogeneration plants (CHP), wastewater treatment plants, and biogas utilization facilities are high-end engineering facilities that require constant monitoring, optimisation and control during operation. In general, these tasks are fulfilled by operating staff on site, pressing keys and turning controllers on the switch cabinet to the desired position. HAASE Control and Telecontrol Systems make these actions obsolete.

### Plant control by mouse click

The HAASE Control System delivers all operating status data to a personal computer with WINDOWS desktop. It provides a digital display of plant parameters, active flow charts, and behaviour curves. The plant operator monitors and controls even the most complex installations with a mouse click from his office. HAASE Control Systems can be retrofitted to any common control system!

### 24h control from anywhere around the world

Wherever the plant operator may be – either right next to the installation or at a quite distant location – the so-called “Telecontrol System” makes data transmission possible via telephone networks, mobile communication, or through the internet. Remote alarms will additionally be signalled via voice recording, Citycall or SMS and must be acknowledged on receipt. Transmission is on a high security basis with password protection.

HAASE Telecontrol Systems are currently used to supervise plants in Germany, Greece, Italy, Hungary, Austria, England, France, Turkey, and South Korea (Reference list available). Plant parameters are either transmitted to HAASE Energietechnik's headquarters or to local offices.

### Reports, trends, data export

Just a mouse click, and the Control System makes measuring data and plant status data available, monitors long-term trends and adjusts the settings of individual parameters. It is possible to generate daily, weekly, monthly, and annual reports just as well as maintenance schedules and log-book entries. The recorded data may be exported into most common formats and can be transmitted by Telecontrol to other PCs at remote locations.

### Benefits of the HAASE Telecontrol System:

- Operating staff on site is only required for maintenance and repair work
- Reaction time to fault indications is cut down
- Online adjustment to plant control parameters avoids travelling expenses
- Higher efficiency due to increased plant transparency
- Absence of manual operating and display elements reduces cost for hardware and prevents wear and tear.

The total of all these benefits accounts for considerably reduced operating costs and maximum plant safety and availability.

### Cost-effective plant operation

90 per cent of all systems engineered and implemented by HAASE Energietechnik are currently equipped with a HAASE Control or Telecontrol System. Especially in the event of comprehensive plant financing and management schemes (e.g. BOOT = build-own-operate-transfer) or extensive service packages (O&M = operation-and-maintenance contracts), Telecontrol is the key to cost-effective flat rates!

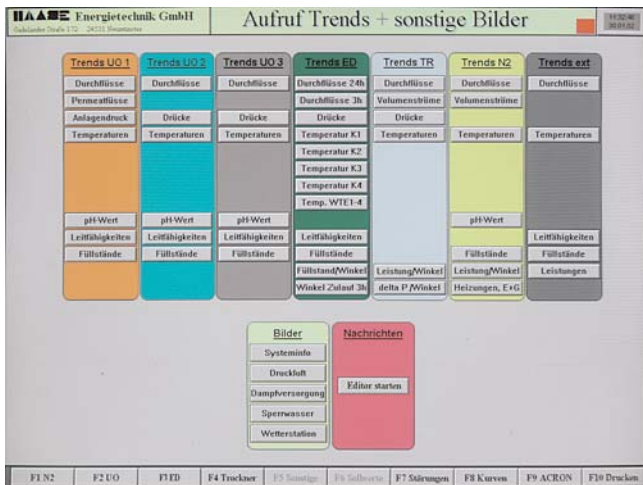
### CONTACT:

Oliver Martens  
Phone +49 (4321) 878-0 Fax 878-29  
eMail: [oliver.martens@haase.de](mailto:oliver.martens@haase.de)

1



2



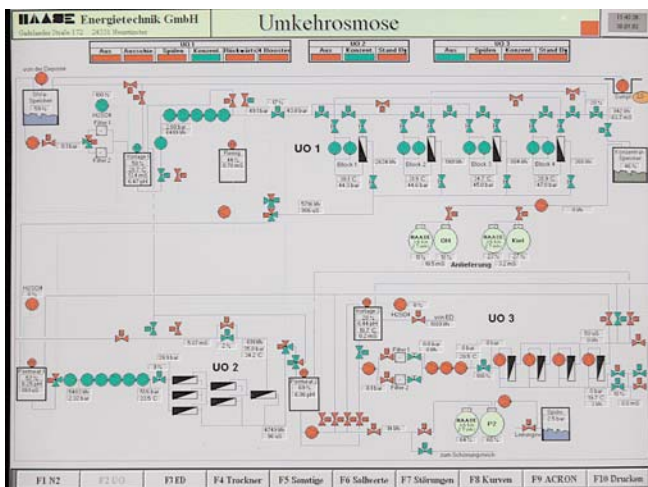
1

The HAASE Control System provides digital supervision and control for all relevant plant functions. Access to the system is possible using any available PC, no matter if it is placed quite close to the installation (here: Control of a leachate treatment facility at Rastorf/Germany) or located anywhere around the world! The latter refers to the so-called Telecontrol System, i.e. the remote PC transmits or receives data from the installation via a modem.

2

Just one mouse click on the Menu gives access to trend charts, details and further illustrations.

3



3

Process flow sheet of a Reverse Osmosis facility for the treatment of landfill leachate at Rastorf/Germany. All relevant operating status data is continuously displayed