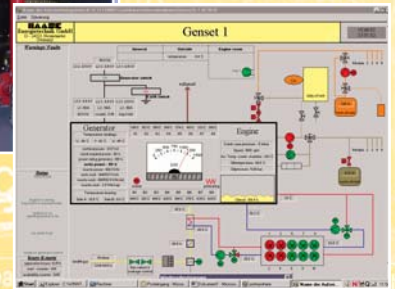


Sudokwon Landfill Gas CHP Facility

Waste-to-energy at Seoul, South Korea



Road for waste transport



HAASE Energietechnik AG

Gadelander Strasse 172
 24531 Neumuenster, Germany
 Phone +49 (4321) 878-0
 Fax +49 (4321) 878-29
 eMail: info@haase-energietechnik.de
 www.haase-energietechnik.de

Construction	2001/2002 at Sudokwon landfill, Seoul (South Korea)
Landfill gas (LFG)	Collection: about 45,000m ³ /h; utilization: about 7,500m ³ /h
Operator	Sangwon EnC Co. Ltd., Seoul
Power output	about 10MW of electric energy 5 modules for 1,365kW each, medium high voltage (6.6kV) 3 modules for 1,000kW each, low voltage (400V) 1 module for 370kW, low voltage (400V)
Booster	Booster facilities in modular design for 7,500m ³ /h of LFG
Gas purification system	Activated carbon filter, gas chiller
CO ₂ balance	Max. reduction of CO ₂ equivalent: approx. 49,000 tons p.a. acc. to ASUE and GEMIS/VDEW